





GENERAL NOTES

LEGEND

-  Concrete Surface
-  Gravel Road Re-grading to Temporary Driveway
-  Community Areas To Remain Do Not Disturb
-  No Parking within 15' of Driveway - Per BRC 9-9-7

PROJECT NAME AND ADDRESS

Ponderosa
Neighborhood
Access @
10th Street

SHEET TITLE

Driveway Concept
10th Street and
Cherry Avenue

PROJECT NUMBER

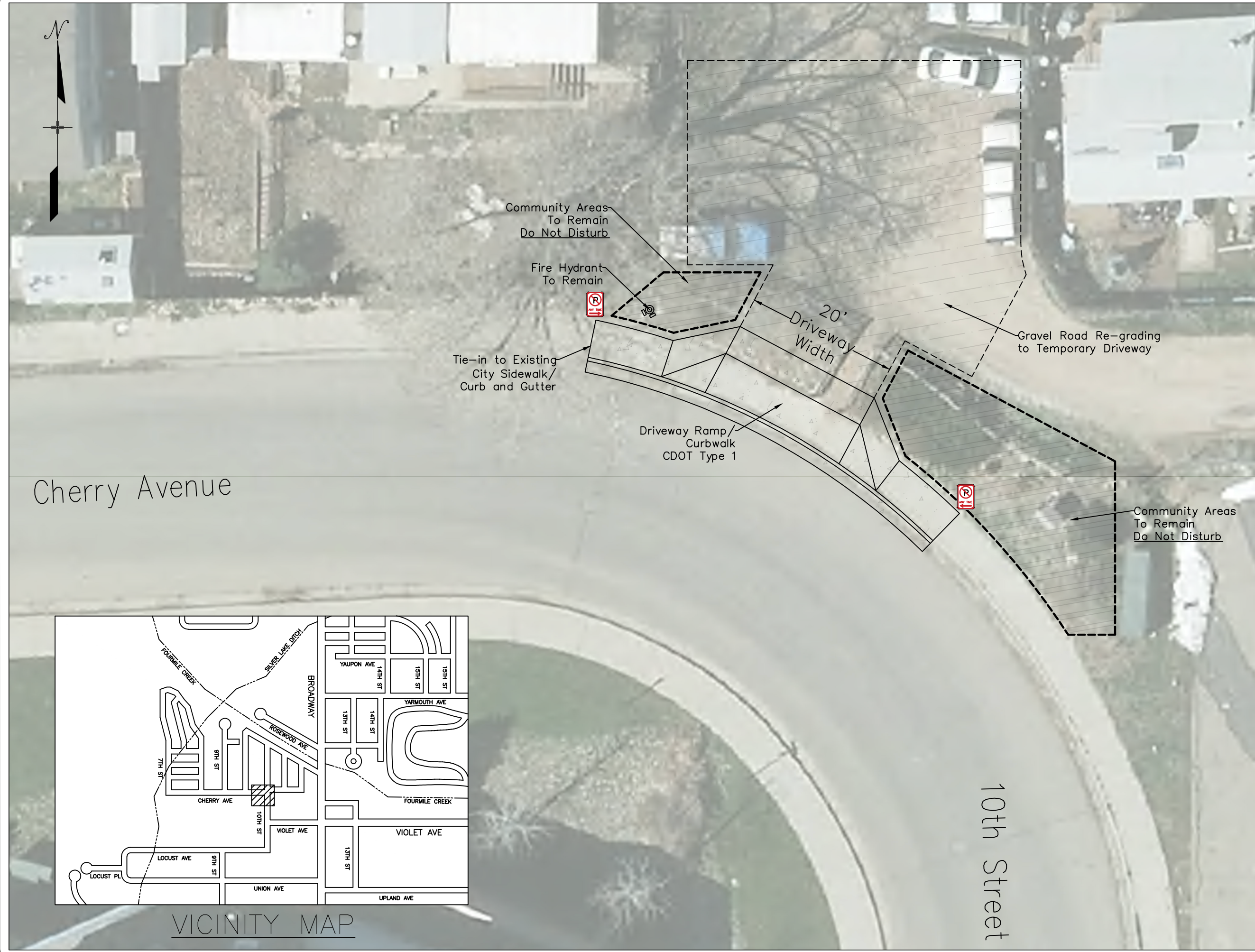
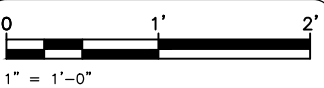
8/7/2019

SHEET NO.

1 of 1

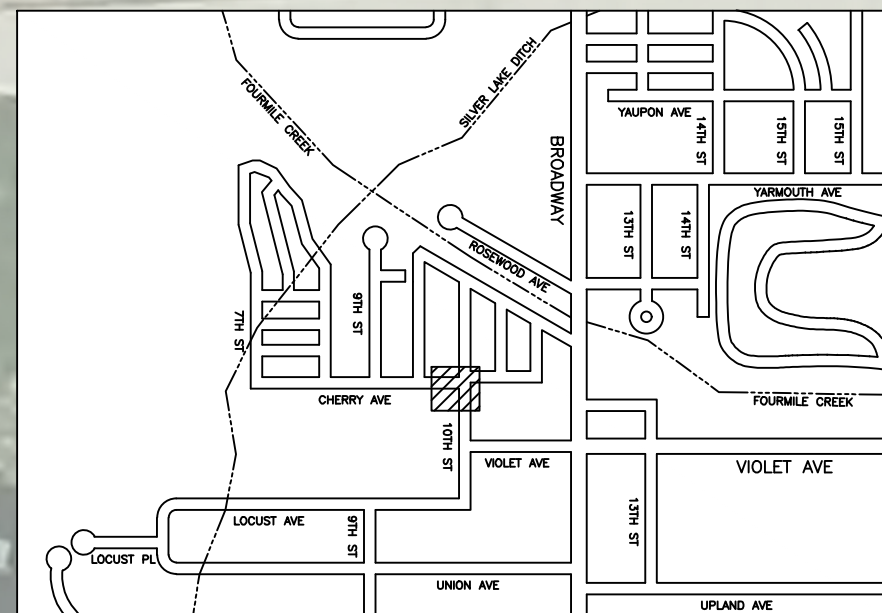
DATE

8/7/2019



Cherry Avenue

10th Street



VICINITY MAP



Community Areas To Remain Do Not Disturb

Fire Hydrant To Remain

Tie-in to Existing City Sidewalk/Curb and Gutter

20' Driveway Width

Gravel Road Re-grading to Temporary Driveway

Driveway Ramp/Curbwalk CDOT Type 1

Community Areas To Remain Do Not Disturb